



SUN
resources 

**EGM INVESTOR
PRESENTATION**

**BOWSPRIT PROJECT
CONVENTIONAL OIL DEVELOPMENT:
OFFSHORE LOUISIANA**

*Alex Parks
Managing Director and CEO*

6 August 2019

▪ Focus on Gulf of Mexico Conventional Oil

- *Sun made a strategic shift to development of oil reserves in a neglected portion of Gulf of Mexico with Co-Venture participant Pinnacle Exploration Pte Ltd “Pinnacle”*
- *2017/2018 Sun secured a 50% working interest in 1,154 acres leased in Breton Sound Area, inland shallow waters offshore Louisiana 70km southeast of New Orleans.*
- ***July 2019 – Sun Purchased Pinnacles 50% interest, to move to 100% and total control of the project.***
- *Immediate move to fund drilling via farm out or capital raising with a view to drilling first well in Q1 2020.*

▪ The Bowsprit Lease

- *Lease overlies a field first developed by Shell in the 1960s for deep gas (450ft column)*
- ***Oil & gas has been proven to flow from shallower oil zones but was sub commercial to fully develop in 1960s***
- *The field is a re-development project with proven, conventional, good quality reservoir, light-sweet oil*
- ***Minimum economic field size is ~0.5MMbbls***
- ***Sun’s Conceptual Development plan assumes (gross) 2.5MMbbls of oil from 5 wells, with a Breakeven oil price of ~US\$30/bbl***
- ***RISC modelled a 1,200ft Horizontal Bowsprit well at IP of 2,000bopd and an EUR of 670,000 bbls***
- ***Cost for a horizontal well only US\$3.6 million***
- *To prove the field potential, Sun is targeting drilling appraisal well in Q1 2020*
- *Full field development and first oil potentially in mid 2020*

CORPORATE SNAPSHOT



Capital Structure: As at 31 July 2019

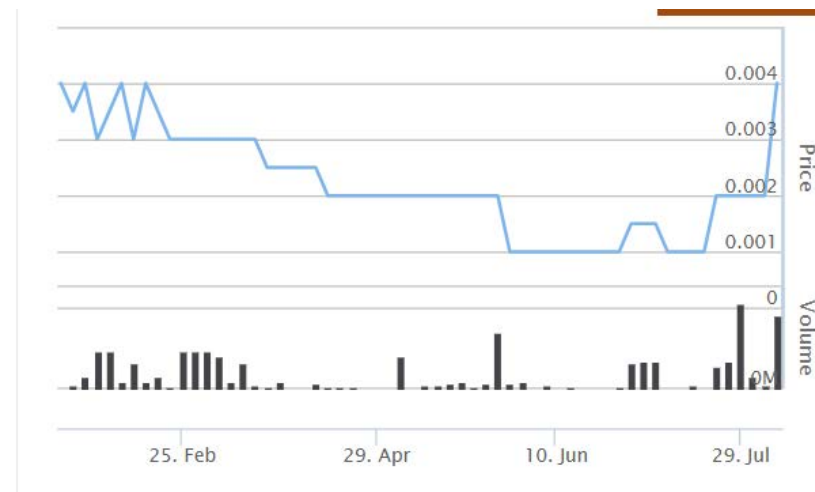
ASX code	SUR
Ordinary shares on issue as at 31 July 2019	956m
Listed options (A\$0.01) exp. 19 October 2020	393.8m
Unlisted options (A\$0.004) exp. 31 Dec 2020	50m
Share price as at 31 July 2019	A\$0.004
Market capitalisation (@ A\$0.004)	A\$3.8m
Cash at 31 July 2018	A\$105k

Top Six Shareholders: As at 31 July 2019

Fast Lane Aust. P/L	21.41%
Bellarine Gold P.L	6.35%
CM super Fund P/L	3.55%
Mrs Noreen McColl	3.35%
Mr Ian James McCubbing	3.24%
Mr William Bloking	2.56%
Total	40.5%

*Note: The top 50 shareholders, including Board, hold 75.9% of shares currently on issue.
The Board and Management own 7.0% (all purchased)*

Share Price History: As at a 31 July 2019



Partner buyout announced 29 July 2019, Sun 100% of Project

Board of Directors

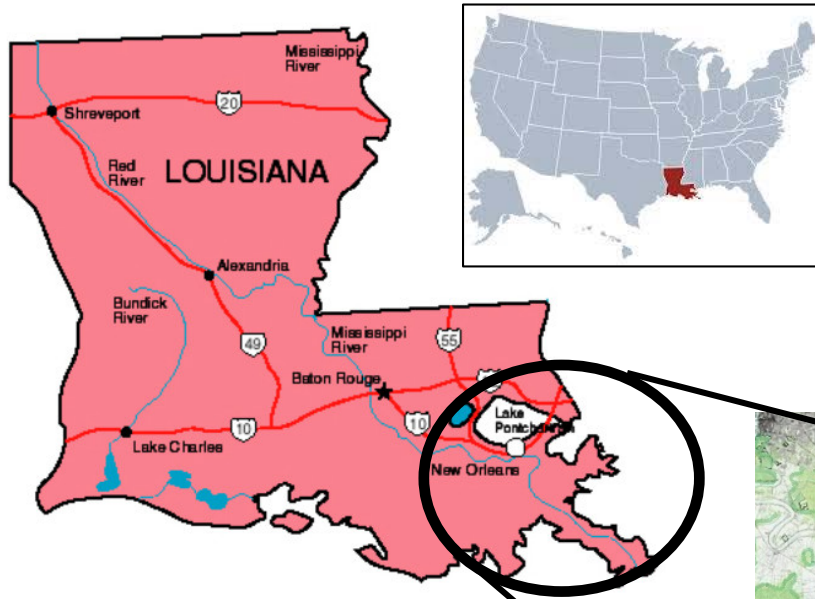
Mr Ian McCubbing	Non-Executive Director, Chairman
Mr Alex Parks	Managing Director & Chief Executive Office
Mr William Bloking	Non-Executive Director

Convertible Note

Sun has a convertible note with Winform Nominees P/L (a subsidiary of Hancock Prospecting) for \$1million plus interest. The loan is repayable out of future production from Bowsprit by 31 March 2021

Hancock has sold out in 2019 – creating some downward pressure on share price

FOCUS AREA - BRETON SOUND, LOUISIANA



Prolific Hydrocarbon Province

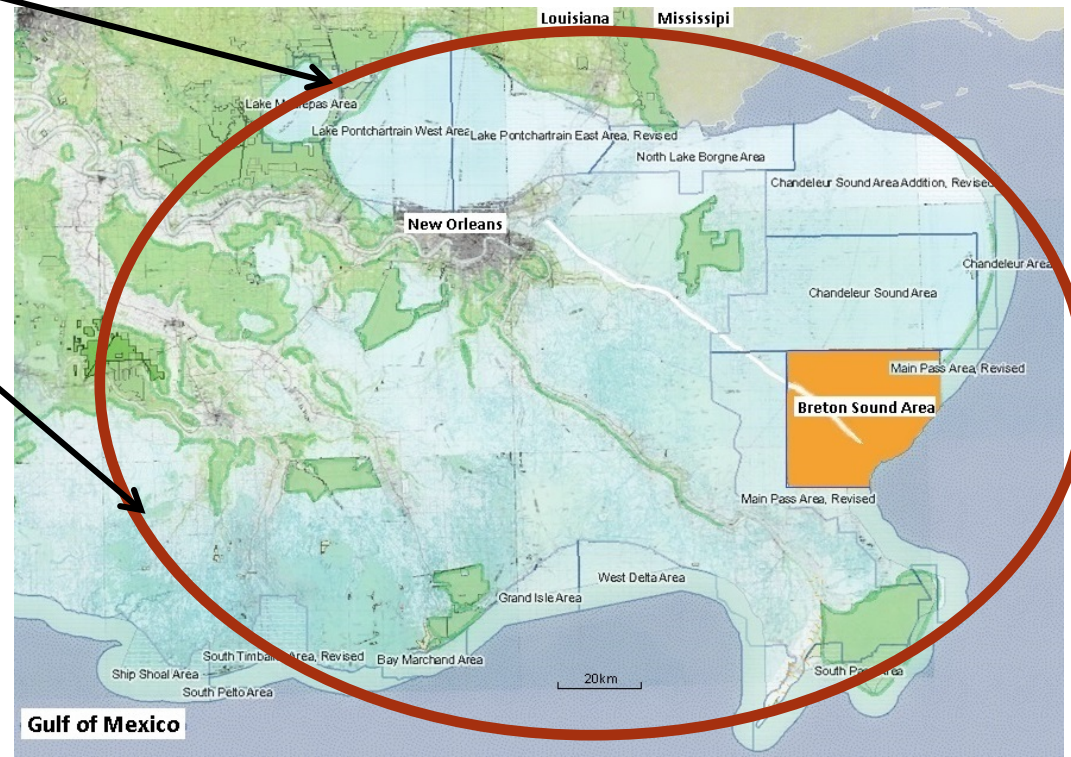
- *St Bernard & Plaquemines Parishes (Red Oval) have produced 1.2 billion bbls of oil and 5.2 Tcf of gas since 1978*
- *Favourable sedimentary circumstances combine with a variety of structures to provide excellent conditions for accumulation*
- *Miocene sediments have yielded more than three billion barrels of oil from approximately 380 fields along the Louisiana Gulf Coast*

Oil-rich Eastern GoM Fairway

- *Shallow water, barge accessible*
- *Production & Sales infrastructure adjacent*
- *Services & equipment available locally*
- *Assessed to be commercial at current oil prices*

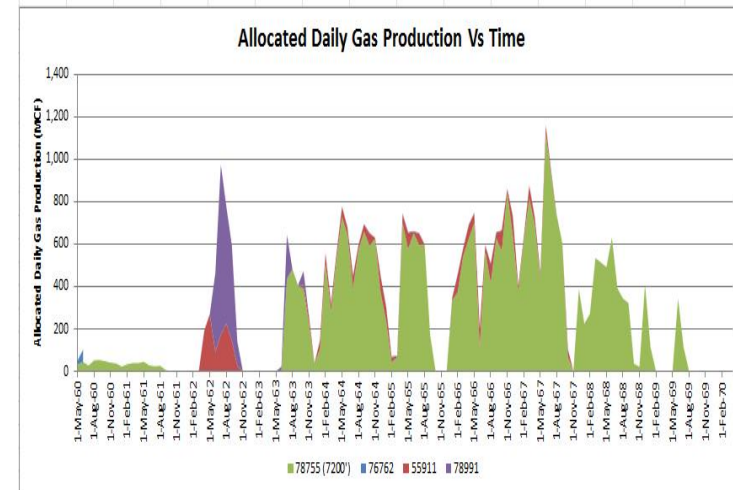
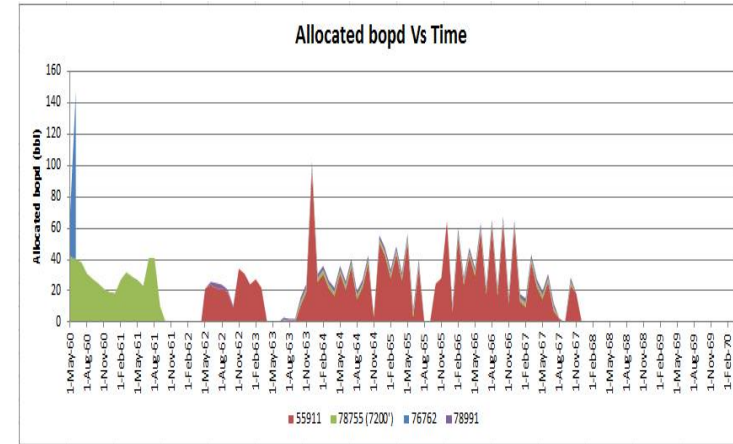
Sun's Bowsprit Project

- *Proven oil in reservoir that has flowed 75,000 bbls*
- *Horizontal well development*
- *Minimum Economic pool size estimated to be 0.5MMbbls*



Bowsprit Lease History

- Shell discovered deep field in 1955
- Produced gas & condensate for 25+ years from deeper zones
- Small Operators produced 1Bscf & 75k bbls from 7,200' & 7,400' sand from vertical wells
- 7,400' Zone consists of deltatic/shelf sands and shales with up to 55' feet of oil column in target sands.
- < 3m of water, extensive existing infrastructure, ready offtake arrangements and low unmanned operating costs
- Sands are thin for vertical offshore wells but horizontal wells should increase IP's and EUR's to commercial volumes
- Horizontal well in nearby analogous field was production tested at 1,500bopd. RISC modelled a 1,200ft horizontal crestal well in Bowsprit capable of IP of 2,000bopd and EUR of 670,000bbls (Ref ASX release 5 April 2018)
- Up to 5 horizontal wells to be drilled into main target sand at 7,400 ft, constrained to an average IP of ~1,000bopd to extend field life
- Secondary potential in undeveloped shallower oil reservoirs

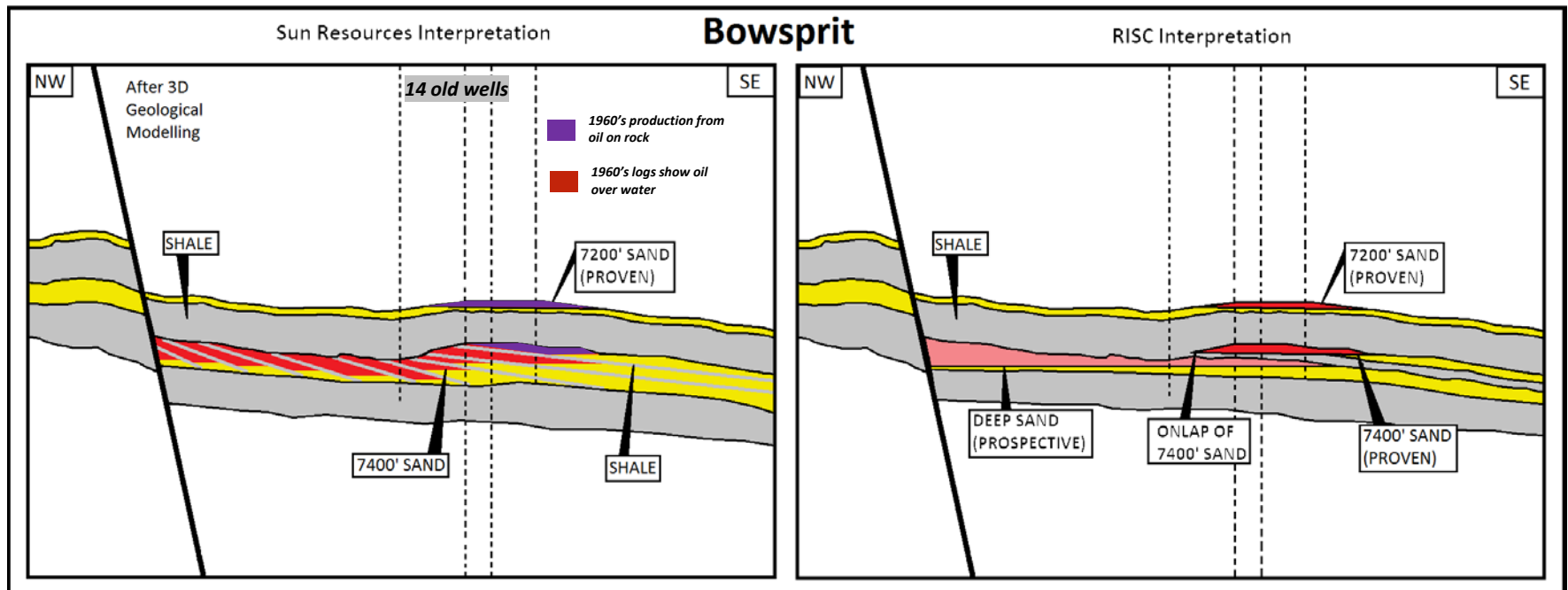


Production History of the Bowsprit Field 1960 to 1969

BOWSPRIT CROSS SECTION

Field schematic and alternative interpretations

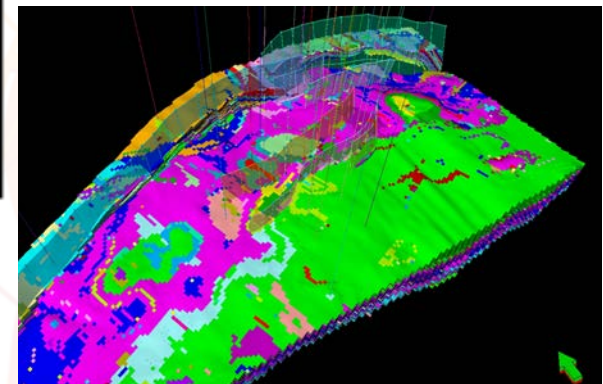
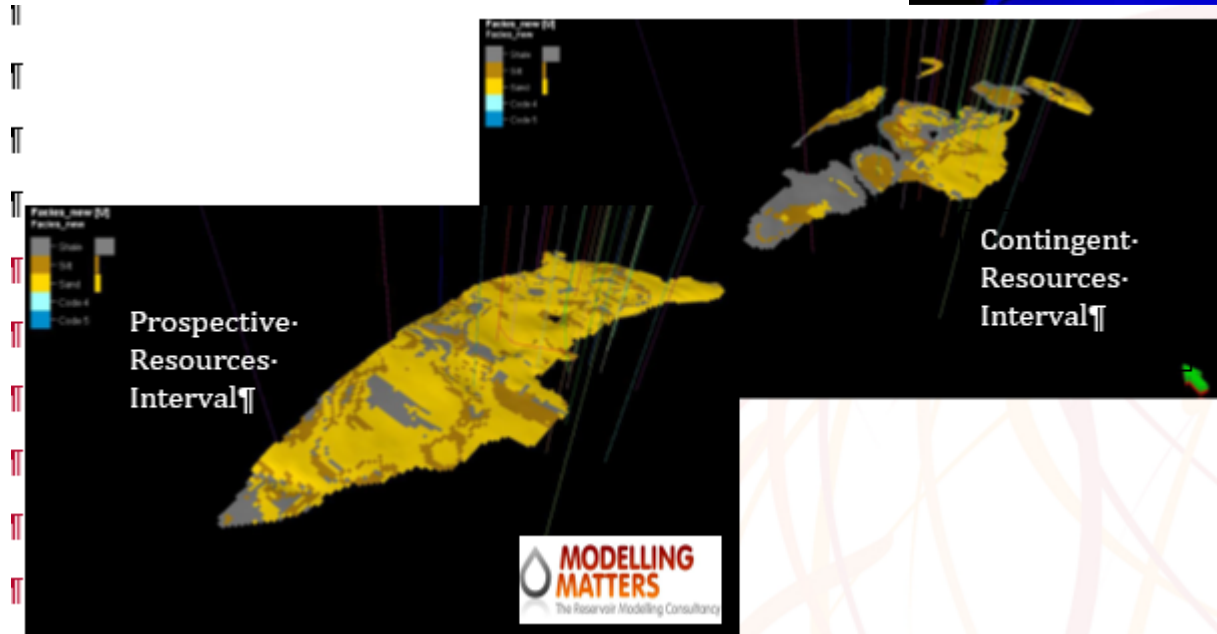
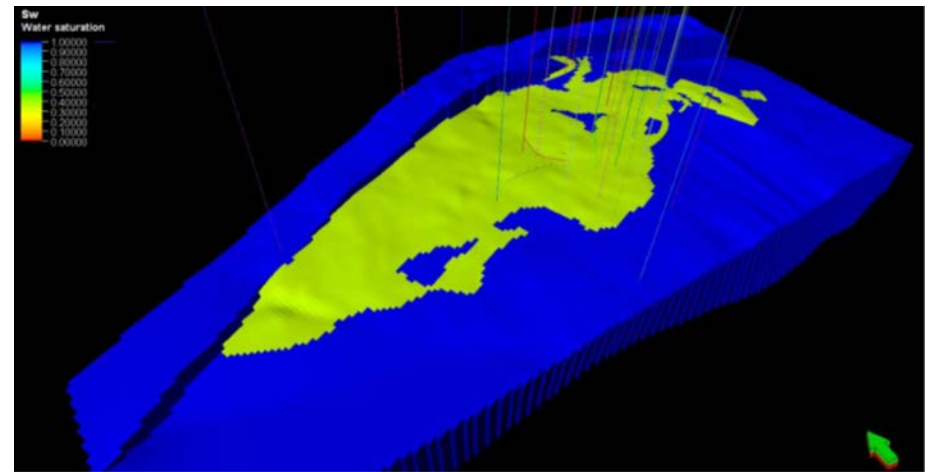
- The Bowsprit Field is covered by high quality 3D seismic, it has an area of approximately 1,000 acres (4km²)
- The gas in the 7,200' sand stands out on seismic and conforms to structure. The 7,200' sand is juxtaposed against the 7,400' sand to the north of the fault and appears to be water saturated beneath the gas
- The 7,400' sand package contains moveable oil (75,800bbls produced) and appears to juxtapose against a thick shale to the north of the fault
- RISC separate the 7,400' into two sands. Following 3D geological modelling Sun interprets it as multiple oil bearing interbedded sand and shales with separate sand bodies giving the field multiple OWC's.
- This will ideally be produced via horizontal wells



BOWSPRIT 3D STRUCTURE

- Map and Area of Contingent Resources, Prospective Resources and Suns Top Structure Map

- Sun maps a package of sands under the 200ft thick shale that separates the 7,200' and 7,400' zones*
- RISC maps an onlap (7,400' sand) and underlying deeper sand (7,400' deep)*

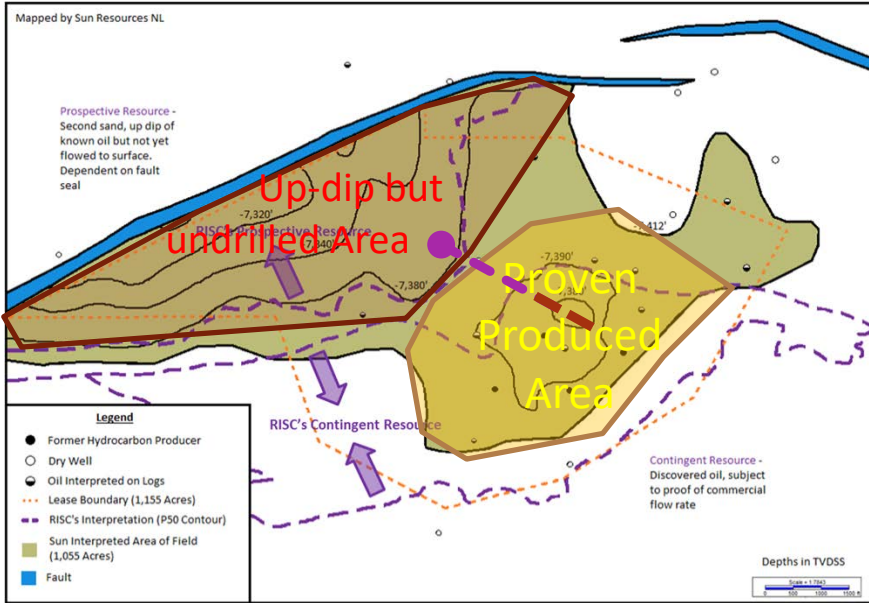


3D Modelling of the Bowsprit Field by Modelling Matters

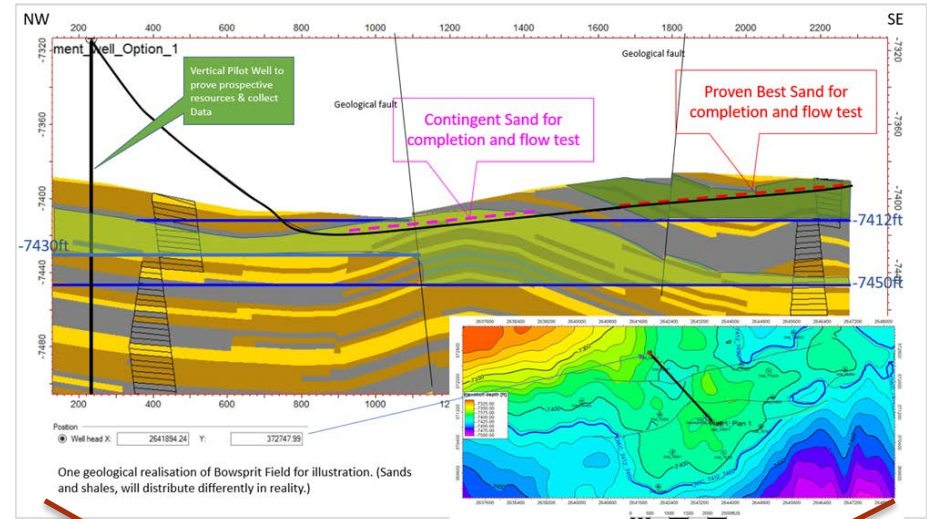
APPRAISAL PROGRAM Vertical Pilot + Horizontal



Work Program

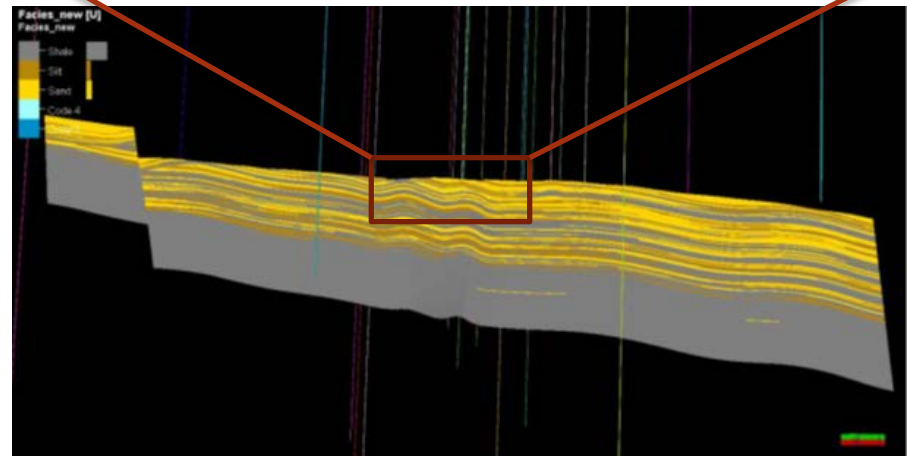


Well 1 in Proven Area – to show commercial Rate possible (~1,000bopd) from Horizontal well. 75,000bbls flowed in 1960's at ~100bopd



Sun's Target Timetable

Select well locations using 3D model	Jan 2019
Permit surface locations	4-6 months
Permit to drill	October 2019
Drill and interpret results	Q1 2020
FID – fund and design facilities	by end Q2 2020
Develop & First oil	Q3 2020



RESOURCE SUMMARY



RISC Advisory Ltd probabilistically estimated the following contingent and prospective resources for the Bowsprit Project as of 15 March 2018: *RISC's independent estimate of resources for the field within polygon of held leases is tabulated below (Sun increased from 50% to 100% Working Interest July 2019¹)*

	Contingent Resources 100% of Field			
Sand	1C	2C	3C	Units
7,200'	0.14	0.42	0.76	Bscf
7,400'	0.08	0.76	1.7	MMbbls
7,400' Associated Gas	0.08	0.84	1.9	Bscf

Contingent on appraisal well confirming horizontal well deliverability at commercial rates

	Unrisked Prospective Resources 100% of Field			
Sand	Low	Best	High	Units
7,400' Deep	0.1	1.72	6.08	MMbbls
7,400' Deep associated Gas	0.1	1.66	8.88	Bscf

Contingent on appraisal well confirming "resistivity kick" on logs is actually moveable oil

Sun's Conceptual Field Development Plan

- An appraisal well is planned for Q1 2020 to:
 - Vertical Pilot to establish the Prospective Resources are present and moveable (Sun interprets oil on logs)
 - Ideally a Horizontal section to be drilled and flow tested to prove deliverability of Contingent Resources
- Subject to results of the appraisal well – Sun estimates approximately 2.5MMbbls of Oil and 3.5Bscf of Gas may be produced from 5 horizontal development wells with a breakeven oil price of ~US\$25-30/bbl

RISC assesses the chance of success for the prospective resources as 20% (1 in 5)

Due to the old data set, RISC have assumed a wide range of parameters, that will narrow dramatically once an appraisal well is drilled

1. See ASX Release of 5 April 2018 for the full Initial Resource Assessment disclosure and Cautionary Statements

Sun increase from 50% to 100% of the Field – subject to completion of buy out of Pinnacle.

STOIIP SUMMARY



RISC Advisory Ltd has probabilistically estimated the following STOIIP & GIIP for the Bowsprit Project as of 15 March 2018:

	Potential Hydrocarbons Initially in Place			Units	Status
	P90	P50	P10		
Sand 7,200'	1.47	1.89	2.37	Bscf	Proven in Place Flowed 1Bscf in 1960's
7,400'	0.7	5.01	12.6	MMbbls	Proven in Place Flowed 75,700bbls in 1960's
7,400' Deep	0.99	11.8	49.00	MMbbls	Prospective Possible separate sand unit. Up dip of know (flowed) oil, resistivity on logs, but not yet flowed to surface

Cautionary Statement – See ASX release 5 April 2018 for detailed Initial Resource Assessment and full cautionary Statements
RISC assesses the chance of success for the prospective resources as 20% (1 in 5)

Recovery Factor

- RISC estimated a horizontal well could produce at initial rates of 2,000bopd (EUR of approx 670,000 bbls of oil)
- RISC has assumed a Recovery Factor of 15% to 25% of the Field STOIIP assuming full field development
- RISC estimates P50 EUR for 7,400' sand (whole Structure) as 0.97MMbbls + gas
- Subject to Prospective Resources being present and moveable RISC estimates P50 EUR for 7,400' Deep sand (whole Structure) as 2.33MMbbls + gas
- **Subsequent to the RISC Resource Estimate Report - Sun constructed a 3D geological model of the field. The Deterministic STOIIP estimate was 30-40MMbbls (within the RISC range).**

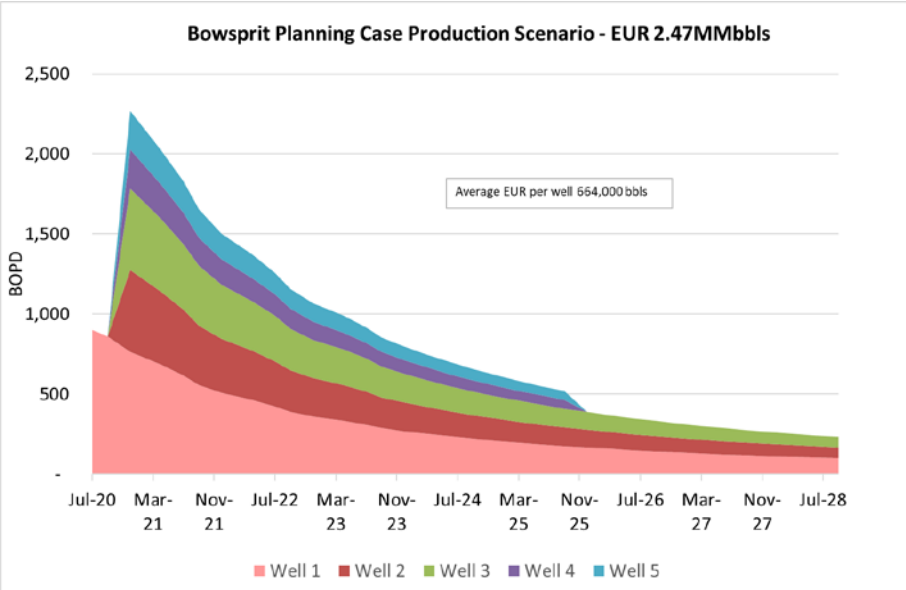
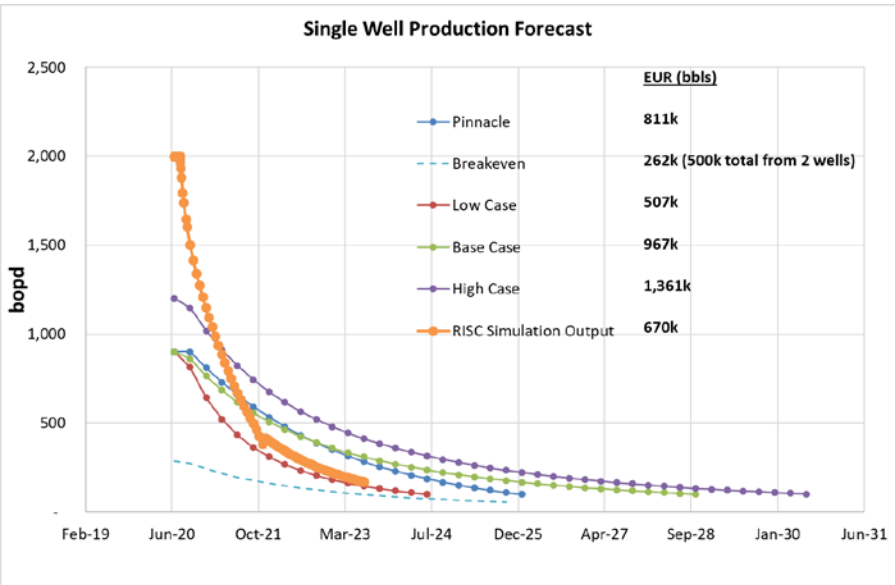
BOWSPRIT DEVELOPMENT PLAN PROGRESS



Implementation Team Appointed

- Louisiana based FensterMaker to survey & permit the well and facility site location
- Louisiana based Brammer Engineering have been appointed to implement the project
 - Provided Pre- AFE well cost estimates, CAPEX and OPEX estimates based on local experience
 - Is to provide (in conjunction with Sun), detailed well engineering, rig selection and well drilling management, facilities design and installation management
 - Potential future sub-contract Field Operator and HS&E services

Well and Field Production Forecasting



THE PROJECT – FIELD DEVELOPMENT PLAN



Conceptual Field Development Plan

2.5MMbbls & 3Bscf of associated gas is produced

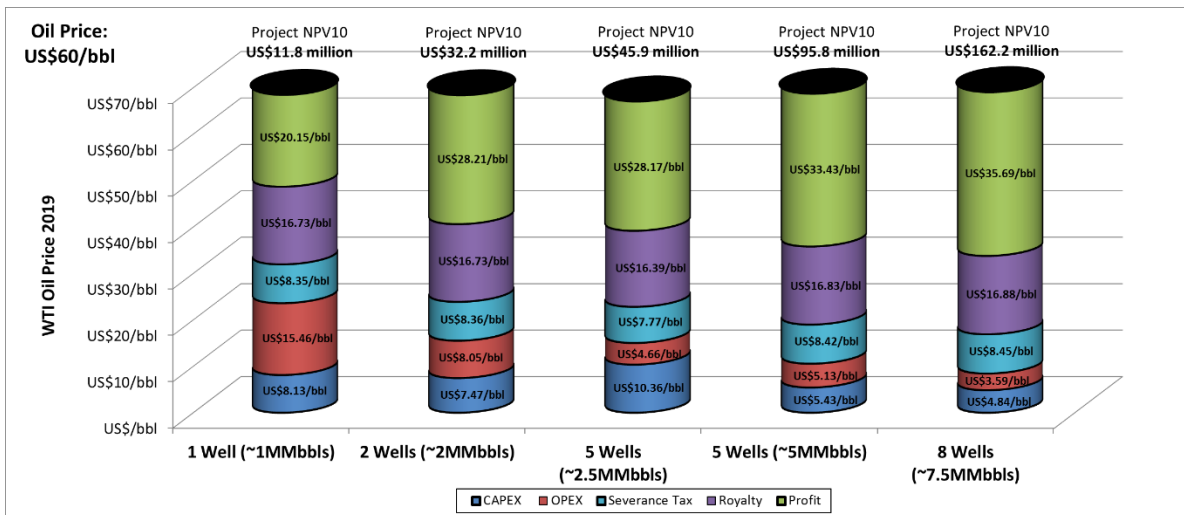
Source

- 5 horizontal wells US\$ 15.5 Million Brammer Engineering (pre AFE)
- Unmanned production facility US\$ 4.5 Million installed Checked by Brammer
- 2.5km parallel export pipelines to tie in point US\$ 0.6 Million installed Brammer Engineering (pre AFE)
- OPEX ~US\$1.8 million per annum for 5 Years US\$ 9.00 Million Checked by Brammer
- Royalty 26% (21% State + 5% Pinnacle)
- Severance Tax 12.5% after drill cost recovery

*Assumed export Tariff of ~US\$3/bbl offset by anticipated premium to WTI

As most costs are essentially fixed – the more oil produced the higher the profit margin

Plan is to commence production with 2 wells and add (up to) 3 more development wells ~6 months after first oil



RISC Resources Summary

Contingent Resources (CR)

Prospective Resources (PR)

CR 1C = 0.08MMbbls

PR - low Case = 0.1 MMbbls

CR - 2C = 0.76 MMbbls

PR - Best Case = 1.72 MMbbls

CR 3C = 1.7 MMbbls

PR - High Case Pros = 6.08 MMbbls

FIT FOR PURPOSE, LOW COST DEVELOPMENT OPTIONS



Shallow-draft barge drilling rig



Suspended well with protection cage



Typical production facility



Production facility



Typical well head with walk way to facilities



Storage tanks with walk way to well head

- **Foundation Asset – Bowsprit Lease (Sun 100%)**
 - *Primary field on known accumulation with redevelopment potential*
 - *3D modelling and visualization, permitting in progress,*
 - *Farm –out & funding support for drilling*
 - *Drill & flow test well 1 to prove commercial rates & prove whole structure contains moveable oil*
 - *Install production facilities, produce first oil – 2-4 further development wells*
 - ***Sun's prime focus will be on progressing Bowsprit to production ASAP***

- **Expansion - Identify and secure follow up Projects 2/3/4 in area**
 - *Data purchase and detailed work up of opportunities, development and appraisal concepts*
 - *Nominate and secure acreage*
 - *Detailed planning and desk top work, FEED etc*
 - *Fund development planning from Bowsprit cashflow and farm out to fund drilling / development*

- **Long Term Growth**
 - *Identify new exploration and use new, cable-less 3D Seismic to identify deeper fields*
 - *Use Quantitive Seismic Interpretation techniques on areas never before covered by high resolution 3D Seismic*

- ***Sun is 100% holder and Operator of a Low CAPEX, high margin, oil appraisal / development project.***
- ***Sun seeks to deliver project value for Shareholders***
 - *Project offers significant potential compared to current Market Cap of A\$1.9million*
 - *Sun intend to raise funds to drill and/or farm out , although substantial compared to the company market cap, it is less substantial compared to the project value.*
 - *The major Shareholders support the Company's strategy*
 - *Will see Sun:*
 - *Positioned for drilling Q1 2020 (Ideally a horizontal well subject to Funding/farm-out)*
 - *Re-rateable by research companies and supporting broker*
 - *Prospective News flow*
 - ✓ *Partners working interest acquired*
 - ✓ *Well location picked, site permitting underway*
 - *Farmout / Funding – next goal*
 - *Rig identified*
 - *Drilling planned to commence Q1 2020*

IMPORTANT INFORMATION - DISCLAIMER



This presentation has been prepared by Sun Resources NL ("Sun") for the purpose of providing a company and technical overview to interested parties to enable recipients to review the business activities of Sun. This presentation is limited in scope and is not intended to provide all available information regarding Sun. This presentation is not intended, and does not constitute an offer, invitation, solicitation or recommendation with respect to the purchase or sale of any securities in any jurisdiction, and should not be relied upon as a representation of any matter that a potential investor should consider in evaluating Sun. Any statements, opinions, projections forecasts or other material contained in this document do not constitute any commitments, representations or warranties by Sun Resources NL or its directors, agents and employees. Except as required by law Sun Resources NL shall in no way be liable to any person or body for any loss, claim, or in connection with, the information contained in the document.

Cautionary Statement This presentation was prepared with due care and attention and the information contained herein is, to the best of Sun Resources NL's (Sun) knowledge, current as at the date of this presentation. This document includes certain statements, opinions, projections, forecasts and other material, which reflect various assumptions. The assumptions may or may not prove to be correct. Statements contained in this presentation, including but not limited to those regarding the possible or assumed future costs, performance, dividends, returns, production levels or rates, oil and gas prices, reserves, potential growth of Sun Resources NL, industry growth or other projections and any estimated company earnings are or may be forward looking statements. Such statements relate to future events and expectations and as such involve known and unknown risk and uncertainties, many of which are outside the control of Sun Resources NL. Actual results, actions and developments may differ materially from those expressed or implied by the statements in this presentation. All forward-looking statements or estimates made in this presentation are qualified by the foregoing cautionary statements. Investors are cautioned that forward-looking statements and estimates are not guarantees of future performance and accordingly, investors are cautioned not to rely on forward-looking statements or estimates due to their inherent uncertainty therein.

Recipients of the document must make their own independent investigations, consideration and evaluation. By accepting this document, the recipient agrees that if it proceeds further with its investigations, consideration or evaluation of investing in the company it shall make and rely solely upon its own investigations and inquiries and will not in any way rely upon the document. None of the information in this presentation can be reproduced without the permission of Sun Resources NL. Sun Resources NL recommends that potential investors consult their professional advisor/s as an investment in the company is considered to be speculative in nature. Nothing in this presentation should be construed as financial advice, whether personal or general, for the purposes of section 766B of the Corporations Act 2001. This presentation consists purely of factual information and does not involve or imply a recommendation of a statement of opinion in respect of whether to buy, sell or hold a financial product. This presentation does not take into account the objectives, financial situation or needs of any person, and independent personal advice should be obtained. The views expressed in this release contain information that has been derived from publicly available sources that have not been independently verified. No representation or warranty is made as to the accuracy completeness or reliability of the information. This information should not be relied upon as a recommendation or forecast by Sun.

Any offering or solicitation to investors in the United States of America will be made only to qualified prospective investors pursuant to a prospectus or offering memorandum, each of which should be read in its entirety. To the extent applicable, any placement of securities will only be available to parties who are "accredited investors" (as defined in Rule 501 promulgated pursuant to the Securities Act 1933, as amended) and who are interested in investing in the securities on their own behalf.

Neither the information in this presentation nor any other document relating to this presentation has been delivered for approval to the Financial Conduct Authority in the United Kingdom and no prospectus (within the meaning of section 85 of the Financial Services and Markets Act 2000, as amended ("FSMA")) has been published or is intended to be published. This presentation is issued on a confidential basis to "qualified investors" (within the meaning of section 86(7) of FSMA) in the United Kingdom. This document should not be distributed, published or reproduced, in whole or in part, nor may its contents be disclosed by recipients to any other person in the United Kingdom.

Competent Person - All of the technical information, including information in relation to reserves and resources that is contained in this document has been reviewed internally by the Company's Director, Mr Alexander Parks. Mr Parks is a Petroleum Engineer who is a suitably qualified person with over 20 years' experience in assessing hydrocarbon reserves and has reviewed the release and consents to the inclusion of the technical information.



SUN
resources

ABN 69 009 196 810
Level 2, 30 Richardson Street,
West Perth WA 6005
Telephone: +61 8 9321 9886
Facsimile: +61 8 9321 8161
Email: admin@sunres.com.au
Website: www.sunres.com.au

For further Information

Media and Investor Enquiries

Mr Alex Parks (Managing Director and CEO)

Email: alex@sunres.com.au