



# SUN RESOURCES NL

ABN 69 009 196 810  
(INCORPORATED IN WESTERN AUSTRALIA)

Unit 16, Subiaco Village, 531 Hay Street  
SUBIACO, WA 6008, Australia  
PO Box 1786, WEST PERTH, WA 6872, Australia

Email: admin@sunres.com.au  
Telephone: 61 8 9388 6501  
Facsimile: 61 8 9388 7991

29 July 2009

Australian Stock Exchange Limited  
Company Announcements  
Level 4, 20 Bridge Street  
SYDNEY, NSW 2000

Dear Sir/Madam

## **THAILAND L20/50 2D SEISMIC PROGRAM UPDATE**

Sun Resources NL ("Sun Resources") is pleased to report that it has been advised by Carnarvon Petroleum Limited, as operator of L20/50, that the acquisition of 500km of 2D seismic data on the permit is making good progress. Refer attached plan. To date, over 50% of seismic recording is complete and acquisition is continuing on schedule for completion by the end of August 2009.

Several leads have been mapped on existing seismic, 4 of which Sun Resources believes may contain >50 million barrels of oil in place. The current seismic program will be aimed at better defining these existing leads, and identifying new leads and prospects for drilling in 2010.

The large 2D seismic program will be followed by a drilling campaign of up to 4 wells, where the joint venture is targeting analogous structures to Carnarvon's Phetchabun Basin Oil Fields, with the potential for containing oil in stacked fractured volcanic as well as classic sandstone reservoirs. Previous drilling has demonstrated that oil has been generated within the L20/50 concession.

L20/50 is located between Thailand's two largest producing onshore fields, being the next basin along from Carnarvon's Phetchabun Basin Oil Fields (~12,000 bopd) and 20 kilometres south and in the same basin as the prolific Sirikit Oil Field (>200 mmboc reserves & ~20,000 bopd). Interests in the permit are:

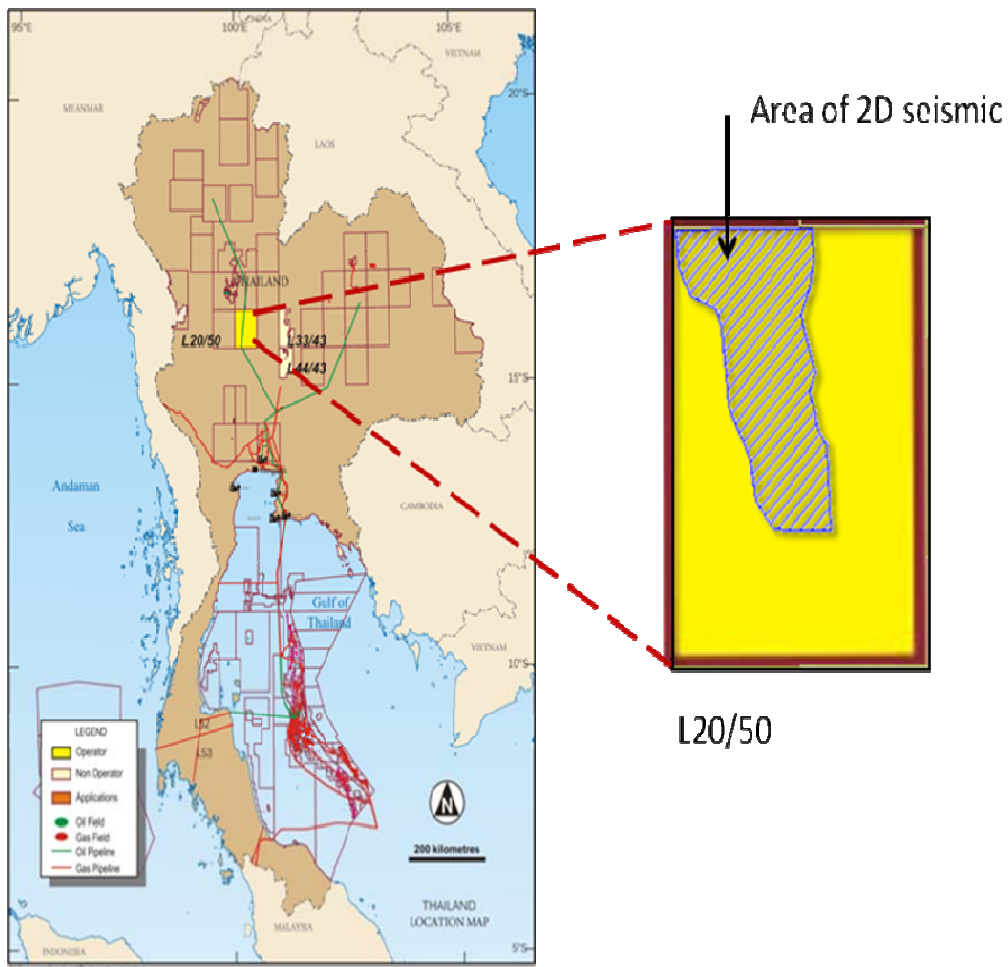
**Sun Resources NL 50%**  
Carnarvon Petroleum Ltd (Operator) 50%

Yours sincerely

**SUN RESOURCES NL**

A P Woods  
**COMPANY SECRETARY/DIRECTOR**  
Attach

Copy: ASX DD Directors CB/Xin File



**Location of L20/50, Thailand, showing outline of seismic survey currently in progress**