



SUN RESOURCES NL

ABN 69 009 196 810
(INCORPORATED IN WESTERN AUSTRALIA)

Unit 16, Subiaco Village, 531 Hay Street
SUBIACO, WA 6008, Australia
PO Box 1786, WEST PERTH, WA 6872, Australia

Email: admin@sunres.com.au
Telephone: 61 8 9388 6501
Facsimile: 61 8 9388 7991

19 May 2009

Company Announcements
Australian Stock Exchange Limited
Level 4, 20 Bridge Street
SYDNEY, NSW 2000

THAILAND L20/50 SEISMIC UPDATE

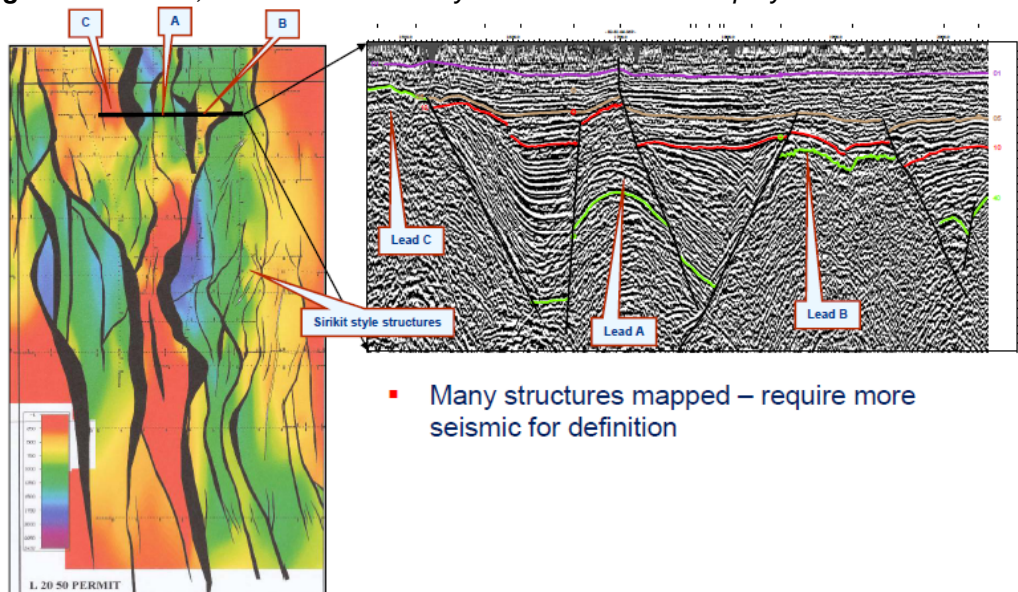
- **Strong potential identified for fractured volcanics analogous to Carnarvon Petroleum's adjacent Phetchabun Basin oil field**
- **Several leads with large resource potential, recently mapped from the current 2D seismic database, will be the focus of a comprehensive new 2D survey commencing July 2009 with drilling of delineated prospects in 2010**

Sun Resources NL ("Sun Resources") is pleased to provide an update on the exploration activities being conducted on Block L20/50 onshore Thailand, where Sun Resources has a 50% interest in the Joint Venture operated by Carnarvon Petroleum Limited ("Carnarvon") ("the Joint Venture").

The Joint Venture has evaluated the petroleum system within the L20/50 Block by utilising recently digitized 2D seismic data, resulting in the delineation of seven significant structural leads. These structural leads will be the focus of a comprehensive 500km² 2D seismic survey aimed at better defining the size and potential oil resource contained within each lead. Good quality seismic data was the key to Carnarvon unlocking the potential of its adjacent Phetchabun Basin Oil Field. The Joint Venture anticipates commencement of the 2D seismic program in July 2009.

The mapped leads vary in size, but preliminary calculations by Sun Resources indicate the largest of the leads (leads A and B) could each contain a speculative resource in excess of 50mmbbls of oil in place (refer figure 1 below).

Figure 1: Leads A, B and C are each key leads to be followed up by the 2D seismic survey.



- Many structures mapped – require more seismic for definition

Technical studies undertaken by the Joint Venture have determined the existence of a mature oil source kitchen in the deepest basinal areas adjacent to the identified leads, and have also demonstrated the potential for stacked volcanic reservoir targets in the leads as per the adjacent Phetchabun Basin where Carnarvon and Pan Orient have announced significant new oil discoveries in the “volcanic play”. The recent discovery by Carnarvon was the sixth commercial volcanic reservoir discovery made in the Phetchabun Basin Oil Field since only 2005 (refer figure 2 below).

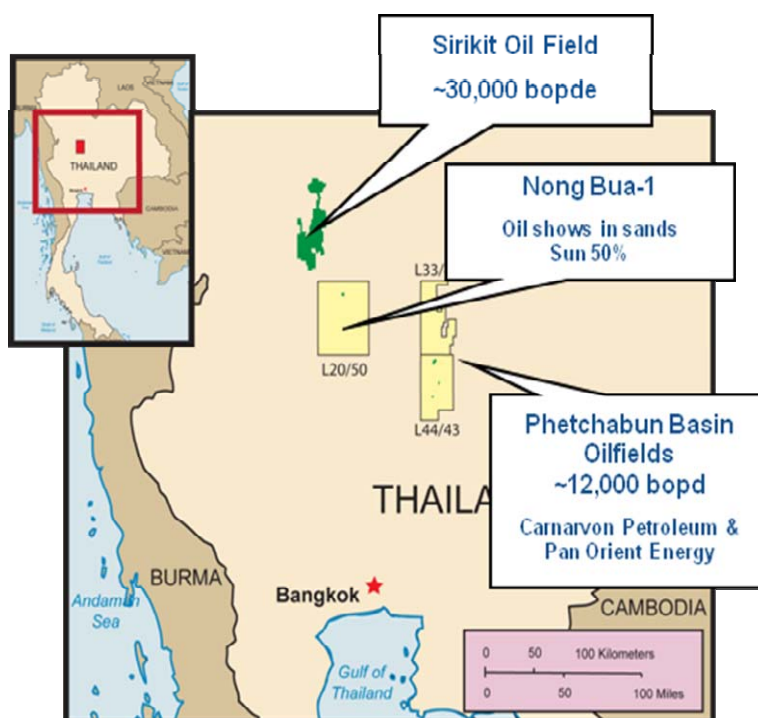
The technical studies have confirmed that all previous exploration wells in the permit are “off-structure” mainly on deeper sandstone plays as per the Sirikit Oil Field, due north of L20/50, and are therefore not valid tests of this play. Despite the record of oil and gas shows in the Nong Bua-1 well, it too has been shown to be sufficiently beyond closure to warrant twinning of the well at this location until further seismic has been run to further delineate the prospect’s target sandstone reservoirs.

This exploration program is targeting an oil resource of similar size to that of Pan Orient and Carnarvon who are producing from the adjacent Phetchabun Basin, just 50 kilometres to the east. The string of discoveries by Carnarvon and Pan Orient has seen this field deliver average production of around 12,000 bopd, and the reporting of a recoverable resource in excess of 40 million barrels from a number of new oil pools in the volcanic play.

Comment from Matthew Battrick, Managing Director of Sun Resources:

“The work carried out by the Joint Venture to date has reinforced the highly prospective nature of this exploration block, particularly for potential oil pools in the volcanic play. We are very excited about commencing the seismic program as its completion will lead to maturation of leads to prospects for drilling that are of a new play type that has delivered an incredible amount of production success to our JV partner in its neighbouring onshore Thailand blocks”.

Figure 2: L20/50 Project Location



Yours sincerely
SUN RESOURCES NL

A P Woods
COMPANY SECRETARY

Copy: ASX DD Directors Auditors CB/Xin

File. This report is lodged on the Company’s website, www.sunres.com.au